



# CODESYS Code Template

For ISOBUS

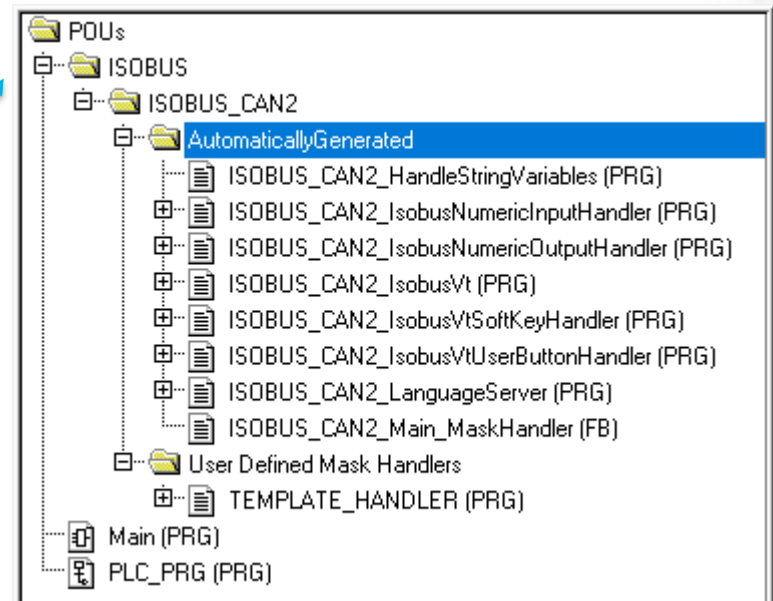
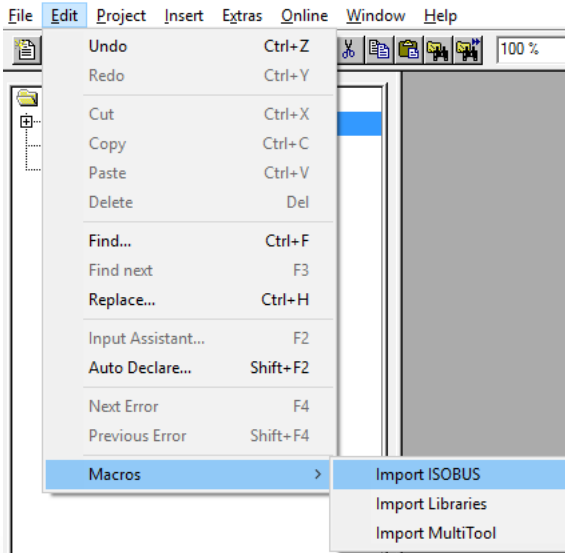
# ISOBUS and Code Template

- ISOBUS is initialized in PLC\_PRG Init action
- After initializations, update programs are called in each program cycle

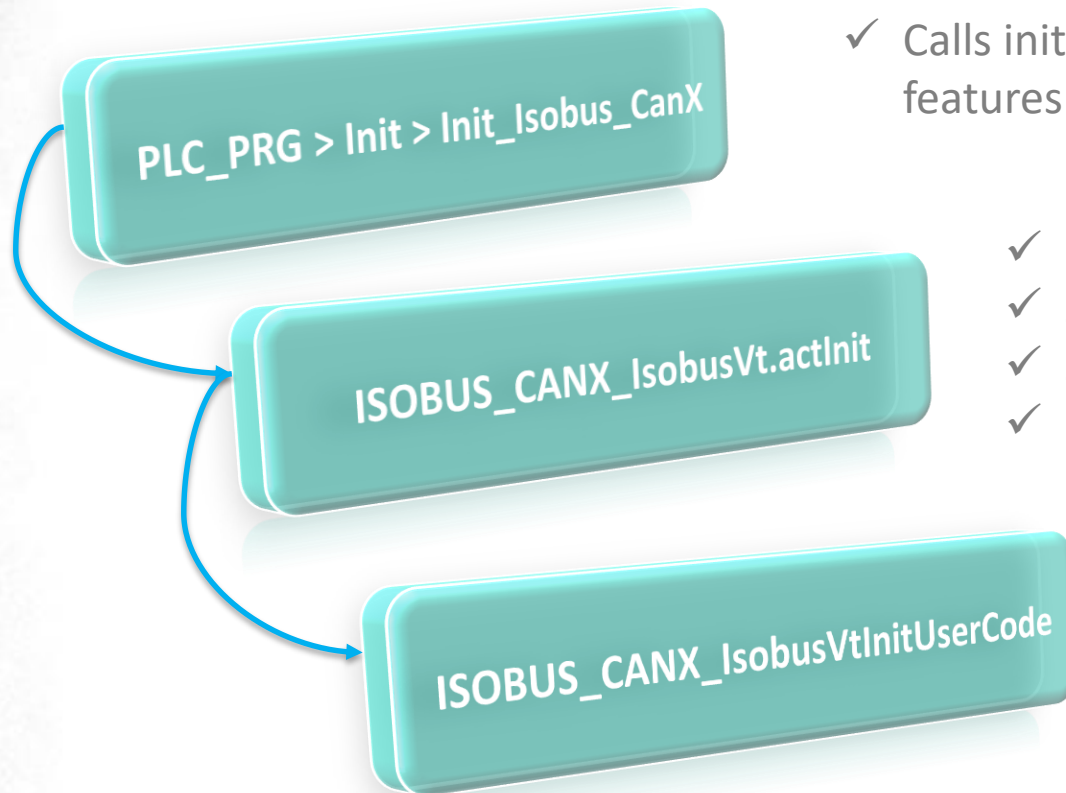
# Import ISOBUS macro

- **Edit > Macros > Import ISOBUS** macro imports ISOBUS handlers and a template program for data/alarm masks
- User code initialization/update programs needs to be added

**Import MultiTool** is used when updating MultiTool configurations to CODESYS project



# ISOBUS Initialization

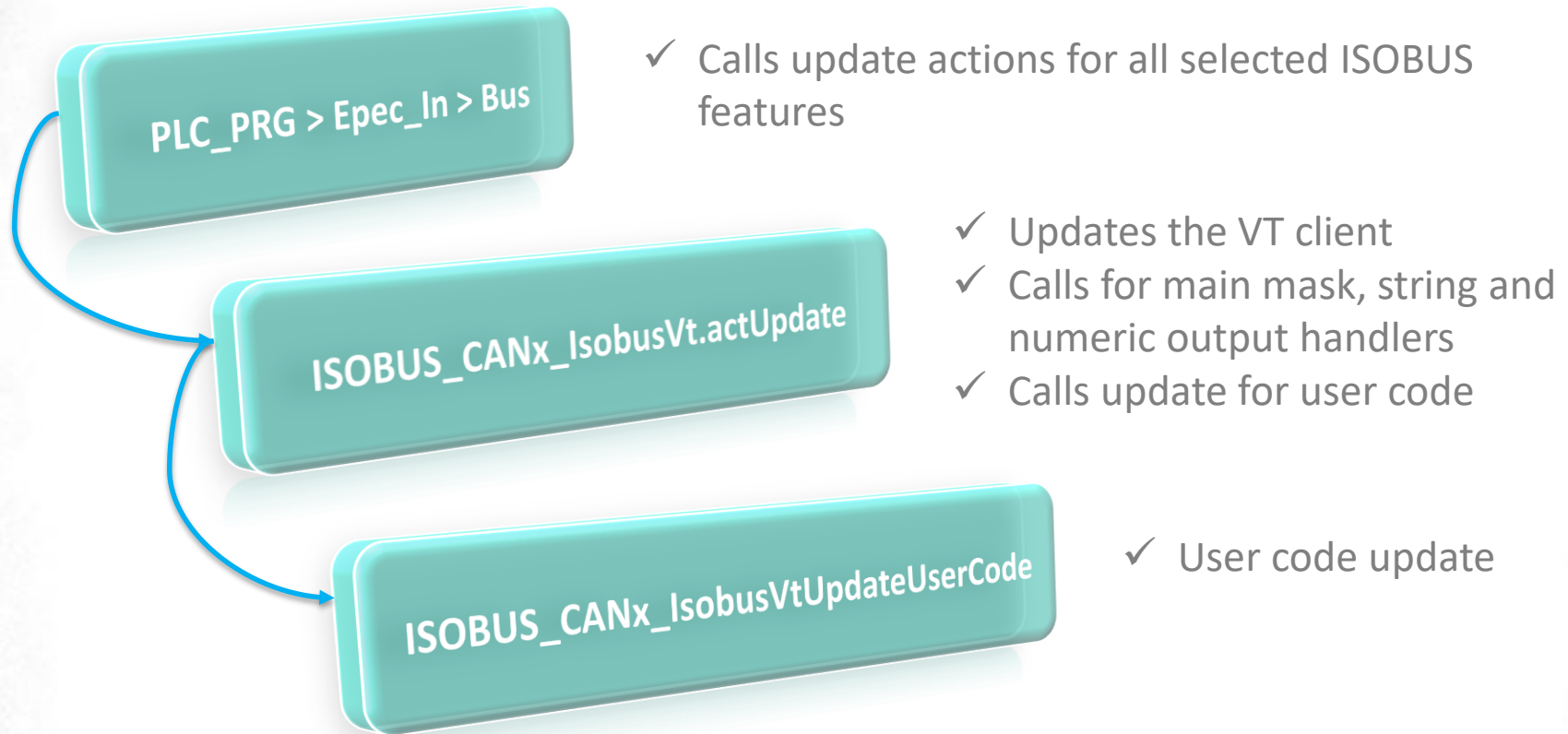


- ✓ Calls init actions for all selected ISOBUS features

- ✓ Reads the object pool binary
- ✓ Sets mask and softkey properties
- ✓ Sets the default language
- ✓ Calls init for user code handler

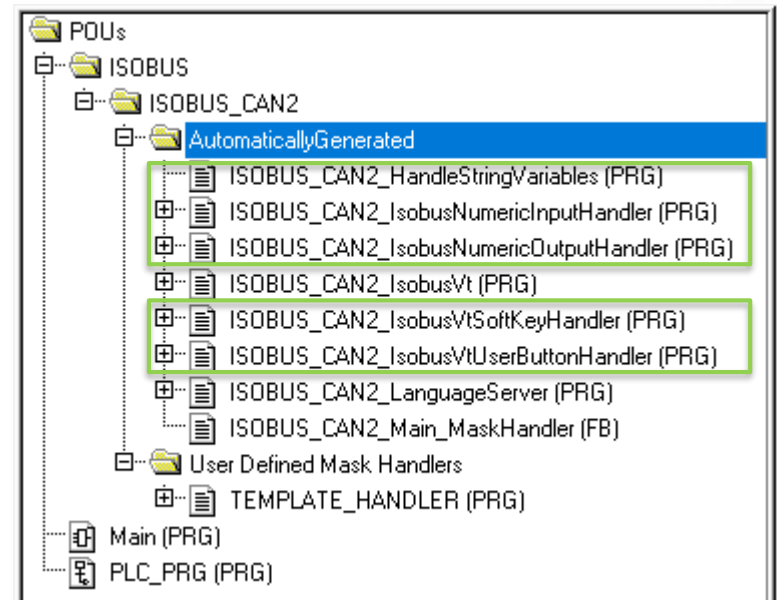
- ✓ Initializes handlers for VT softkeys, buttons, string variables and numeric inputs/outputs

# ISOBUS Application Cycle



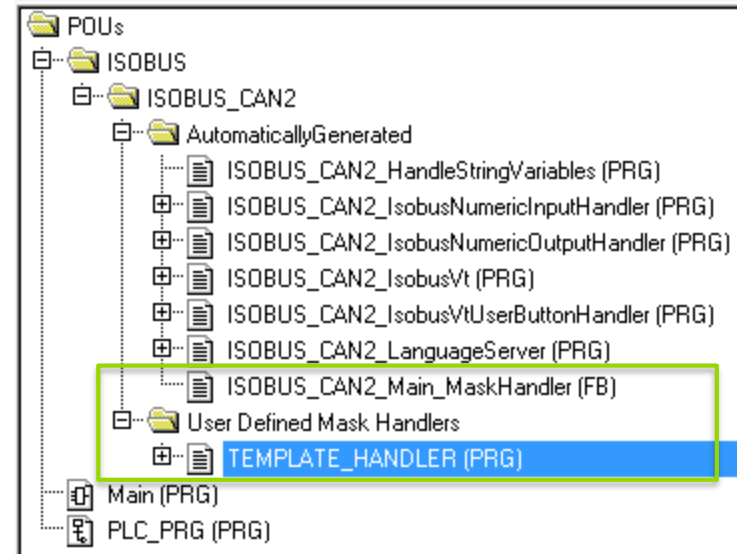
# ISOBUS Handlers

- Handler programs initialize and update
  - Softkey status
  - Button status
  - Numeric input/output values
  - String variables
- Also, POU's for
  - Mask handling
  - Language server
  - ISOBUS VT client PRG



# Handling Data / Alarm Masks

- Each data/alarm mask requires its own handler program
  - The handler program is run when the data/alarm mask is active in the VT terminal
  - TEMPLATE\_HANDLER program is a ready made template that can be used for masks (copy-paste for each data/alarm mask)
- **ISOBUS\_CANx\_Main\_MaskHandler** is the main handler for data/alarm masks that initializes and calls data/alarm mask handler programs



**MADE IN FINLAND**  
Extreme conditions? Bring it on!